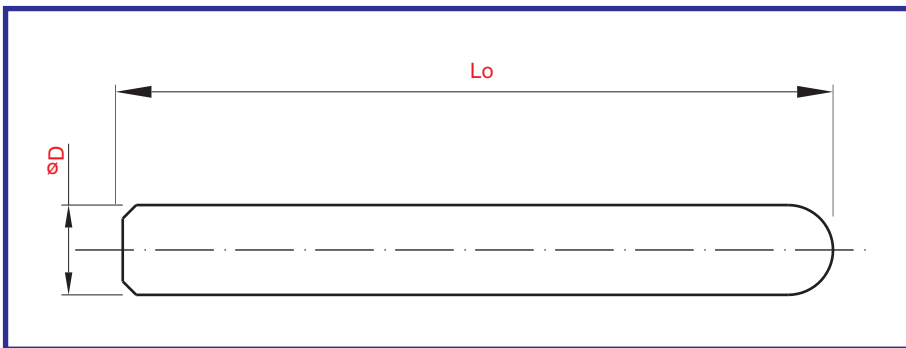


► Dowel Pin Plain



Material :- Case Hardened Alloy Steel

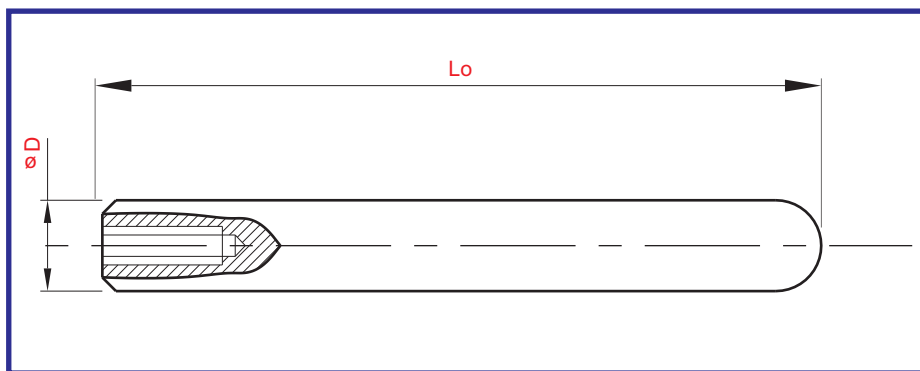
Hardness :- 58-62 HRC

Order Type :- Dowel (Type) - Dia (D) X Length (Lo)

Example :- Dowel (Threaded / Plain) 10 X 50

Dia	Length (Lo)																		
	8	10	12	16	20	25	30	35	40	45	50	55	60	65	70	75	80	90	100
3	*	*	*	*	*	*	*	*	*	*									
4		*	*	*	*	*	*	*	*	*	*								
5			*	*	*	*	*	*	*	*	*	*	*	*	*				
6				*	*	*	*	*	*	*	*	*	*	*	*	*	*	*	*
8				*	*	*	*	*	*	*	*	*	*	*	*	*	*	*	*
10					*	*	*	*	*	*	*	*	*	*	*	*	*	*	*
12						*	*	*	*	*	*	*	*	*	*	*	*	*	*
16							*	*	*	*	*	*	*	*	*	*	*	*	*
20									*	*	*	*	*	*	*	*	*	*	*

► Dowel Pin Threaded



Material :- Case Hardened Alloy Steel

Hardness :- 58-62 HRC

Dia	Length (Lo)																		
	8	10	12	16	20	25	30	35	40	45	50	55	60	65	70	75	80	90	100
6				*	*	*	*	*	*	*	*	*	*	*	*	*	*	*	*
8				*	*	*	*	*	*	*	*	*	*	*	*	*	*	*	*
10					*	*	*	*	*	*	*	*	*	*	*	*	*	*	*
12						*	*	*	*	*	*	*	*	*	*	*	*	*	*
16							*	*	*	*	*	*	*	*	*	*	*	*	*
20									*	*	*	*	*	*	*	*	*	*	*

Order Type :- Dowel (Type) - Dia (D) X Length (Lo)

Example :- Dowel (Threaded / Plain) 10 X 50